

Service Managed Gateway™

Using the Command Line Interface to Manage the SMG

Issue **Version 1.1**
Date 24 February 2010

1	About this document	3
1.1	Scope	3
1.2	Readership	3
1.3	More information.....	3
1.4	Terminology	3
2	Tools for managing the SMG.....	4
2.1	The SMG web.....	4
2.1.1	Logging on to the command line interface	4
2.1.2	Types of commands	5
2.1.3	General commands	5
2.1.4	Abbreviations for elements of command statements	6

© 2010 Virtual Access (Irl) Ltd. This material is protected by copyright. No part of this material may be reproduced, distributed, or altered without the written consent of Virtual Access. All rights reserved. All trademarks, service marks, registered trademarks and registered service marks are the property of their respective owners. Virtual Access is an ISO 9001 certified company.

1 About this document

1.1 Scope

This document:

- explains how to log on to the command line interface,
- outlines the command line interface commands for the Service Managed Gateway (SMG),
- describes the types of commands, general commands, and their abbreviations.

This document is not a comprehensive guide to SMG commands for command line interface.

1.2 Readership

Users of this document must be familiar with the SMG and the command line interface.

1.3 More information

For comprehensive information on SMG commands for command lines, and examples of troubleshooting with the command line interface, read 'SMG Commands for the Command Line Interface'.

For more information about managing the SMG, read the Service Managed Gateway documentation. The current documentation is available online at <http://virtualaccess.com/smgdocs/> Zip files of legacy documentation are available for download at <http://virtualaccess.com/SupportDocsSMGdownloads.htm>

1.4 Terminology

CLI	command line interface
SMG	Service Managed Gateway

© 2010 Virtual Access (Irl) Ltd. This material is protected by copyright. No part of this material may be reproduced, distributed, or altered without the written consent of Virtual Access. All rights reserved. All trademarks, service marks, registered trademarks and registered service marks are the property of their respective owners. Virtual Access is an ISO 9001 certified company.



2 Tools for managing the SMG

You can access the Service Managed Gateway web interface both locally over the Ethernet interface and remotely via the DSL interface, using one of the IP addresses assigned to the particular SMG.

If connected locally, the SMG is configured as a DHCP Server, so your PC, if connected correctly, should have already obtained an IP address in the range 192.168.100.x. The SMG will always have IP address 192.168.100.1 on its Ethernet interface.

2.1 The SMG web

Every SMG features an embedded web that enables remote device management. The web on the SMG includes:

- Fast.Start pages that allow manual configuration;
- Status pages that provide graphical monitoring tools;
- Help pages that include documentation links, registration and support information, and update facilities; and
- Advanced pages that allow detailed and expert configuration and management of an SMG.

You can manage, configure, and diagnose the SMG through the SMG web. To browse to the web server, open the browser of your choice and enter for the URL, one of the IP addresses assigned to the SMG. Enter the login password if prompted.

Note: For SMGs set to factory configuration, there is no password.

Alternatively, you can use the command line interface to manage the SMG. For example, when compiling detailed traces or capturing raw packet dumps.

2.1.1 Logging on to the command line interface

Open the Telnet client of your choice and telnet to one of the IP addresses assigned to the SMG.

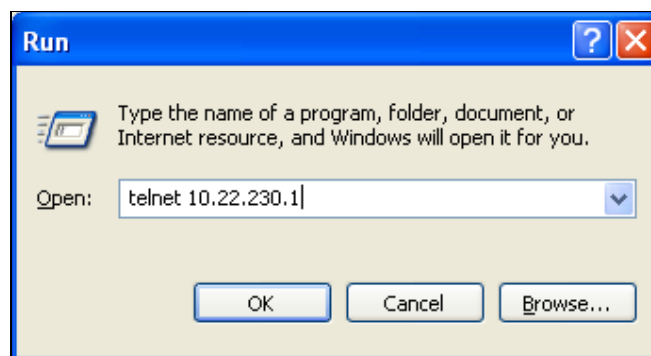


Figure 8.2.1: The run window to access Telnet

© 2010 Virtual Access (Irl) Ltd. This material is protected by copyright. No part of this material may be reproduced, distributed, or altered without the written consent of Virtual Access. All rights reserved. All trademarks, service marks, registered trademarks and registered service marks are the property of their respective owners. Virtual Access is an ISO 9001 certified company.

At the `username:` prompt, type **super** and press Return. At the `password:` prompt, type the password and press Return. The **super>** prompt appears. You can configure and monitor the SMG.

Note: For SMGs set to factory configuration, the password is **super**.

2.1.2 Types of commands

There are three types of command line interface command for the SMG:

- interactive commands;
- configuration commands; and
- reconfiguration commands.

Each type of command requires a different action to make the command active.

2.1.2.1 Interactive commands

Use interactive commands to get the operational status of the SMG. Interactive commands take effect immediately.

An example of an interactive command is:

show stats adsl, which shows the ADSL detailed information on your ADSL statistics. Many **set** commands are also interactive.

2.1.2.2 Configuration commands

Configuration commands define how the SMG behaves. Configuration commands make changes to the configuration. They are loaded automatically from the active configuration file when the SMG restarts.

For a configuration change to take effect, you must commit the change and reboot the SMG.

An example of a configuration command is:

Set IP Interface Address Eth-0, 10.1.1.149, which sets the Ethernet interface address.

2.1.2.3 Reconfiguration commands

Reconfiguration commands make changes to the configuration.

For reconfiguration changes to take effect, you must issue a command to reconfigure the SMG.

After you press Return, you must issue a reconfiguration command.

2.1.3 General commands

Command	Description
Show <parameter>	Show current value of the configuration parameter
Delete <parameter>	Delete the current value of the configuration parameter
Set <parameter> = <value>	Issue a configuration change
Commit	Cause the most recent changes to take effect

© 2010 Virtual Access (Irl) Ltd. This material is protected by copyright. No part of this material may be reproduced, distributed, or altered without the written consent of Virtual Access. All rights reserved. All trademarks, service marks, registered trademarks and registered service marks are the property of their respective owners. Virtual Access is an ISO 9001 certified company.

Save	Make the committed changes permanent
Reload	Cause the system to reboot
Logout	Exit the console session
Sub <string>	List all parameter names that contain <string>
Help <string>	List all commands beginning with <string>
Find <sting> cfg	Will get all instances of a configuration setting within the active configuration
Find <sting> cmds	Will find any 'show' commands containing a particular parameter
++; -	Starts, stops monitoring

Table 1: A list of general commands and their descriptions

2.1.4 Abbreviations for elements of command statements

To improve efficiency and reduce typing errors, abbreviations are available for some elements of command statements.

Element	Abbreviation
Address	Addr
Asynchronous	Async
Committed Config	CFG
Download	DI
Download Status	DLS
Enabled	En
Entry	Et
Eth-0	E0
Gateway	Gt
Interface	If
Local	Lcl
No	N
PPP-1	P1
PPP-2	P2
PPP-3	P3
PPP-4	P4
PPP-5	P5
PPP-6	P6
PPP-7	P7
PPP-8	P8
Protocol	Ptl
Set	St
Server	Svr
Timeout	Tout
Translation	Tr
Yes	Y

Table 2: Abbreviations for elements of command statements

© 2010 Virtual Access (Irl) Ltd. This material is protected by copyright. No part of this material may be reproduced, distributed, or altered without the written consent of Virtual Access. All rights reserved. All trademarks, service marks, registered trademarks and registered service marks are the property of their respective owners. Virtual Access is an ISO 9001 certified company.

